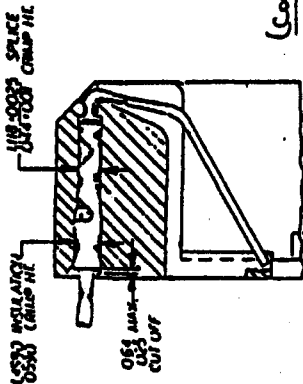
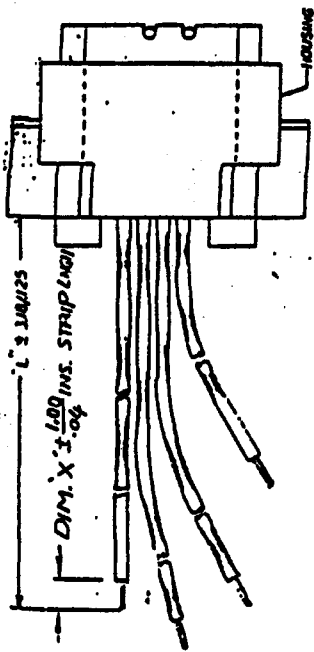
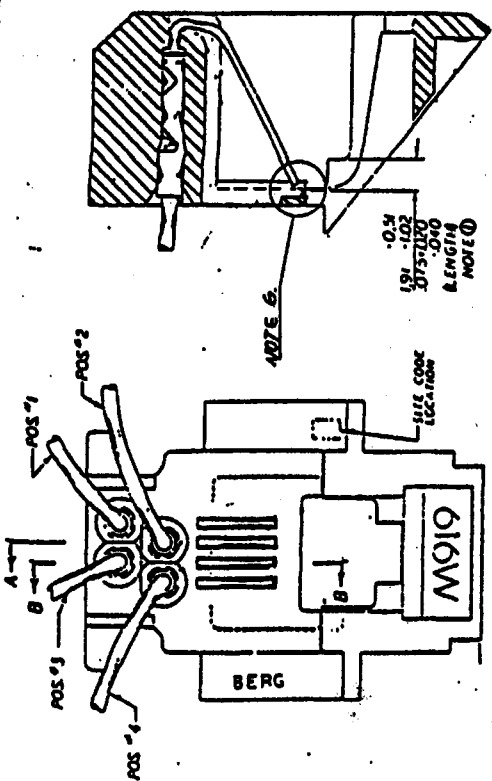


Product no  
SEE CHART



FORWARD SECTION B-B



SECTION A-A

(CONTINUED NOTES)

5. INSULATED WIRE: UNLESS OTHERWISE NOTED (SEE TABLE), USE UL 1061 PAW 27, 7 STRANDS OF TUBED COPPER WIRE, P.U.C. ISOLATION, DUPONT #4-6.
- TID-20FC0019: 361025-200, TYPE B WITH THE TID-20FC0019-200-200, TYPE A
6. TEST METHOD PER UL-7263, SEC. 2.2.2.

- NOTES:
  1. FOR VISUAL MECHANICAL AND FUNCTIONAL REQUIREMENTS SEE SPECIFICATION M919-1.
  2. USA MATL: ABS INCLUDING COMPOND, FLAME RETARDANT PER UL-94 V-0, COLOR SEE TABLE.
  3. TEAR MATL: 3/4 MARD BRASS ALLOY, UNS-C26000, PREPARED - see 1/4003 TOLLER 18 UN-PLATED, SEE TABLE
  4. GOLD WIRE MATL: plus Silver ALLOY, UNS-C50600, 136 TO 150 TH P.S.Z. TESTABLE. SEE TABLE FOR AN-PLATING THICKNESS. (TO BE CONTINUED)

FCI		CUSTOMER COPY		title	
616W SPADELESS MOD JACK		projection		616W SPADELESS MOD JACK	
microcircles unless otherwise specified		linear		product family	
0.8-0.25 / .00-.01		0.00-0.12 / .000-.005		also (eng no)	
0.00-0.05 / .000-.002		angles		A4	
±0.37		dr		code	
T. CHEN		eng		TWIN	
T. CHEN		ch		sheet	
J. TSAO		app		1 of 7	
J. TSAO		sheet index			
1		1			
2		2			
3		3			
4		4			
5		5			
6		6			
7		7			



PRODUCT NO <b>68974</b>		REVISIONS	
REV	DESCRIPTION	BY	DATE
A			

PRODUCT NO	POS. NO.	COLOR	LEAD LNTH DIM. "L"	FINISI. ON END OF WIRE	INS. STRIP DIM. X	INS. WIRE NO	(NOTE 5)	(NOTE 2)	(NOTE 3)	(NOTE 4)
68974-007	1	RED	82.55/3.25	CUT & STRIP	3.00/.12	301025-003		HOUSING	TERMINAL	GOLD WIRE
	2	WHITE	234.95/9.25			-004		PLATING		PLATING
	3	GREEN	234.95/9.25			-005		65883-005	Non-Plated	0.75µm/30µ"
	4	BLACK	82.55/3.25	CUT & STRIP	3.00/.12	301025-002		L/GRAY		
68974-008	1	RED	53.00/2.09	CUT & STRIP	6.00/.24	301025-003		SK11521-001	Plated	0.75µm/30µ"
	2	WHITE	203.00/7.99			-004		Beige		
	3	GREEN	203.00/7.99			-005				
	4	BLACK	53.00/2.09	CUT & STRIP	6.00/.24	301025-002				
68974-009	1	RED	85.60/3.37	CUT & STRIP	4.30/.17	301025-003				
	2	WHITE	218.95/8.62			-004		65883-005		1.27µm/50µ"
	3	GREEN	218.95/8.62			-005		L/GRAY		
	4	BLACK	85.60/3.37	CUT & STRIP	4.30/.17	301025-002				
68974-010	1	RED	82.60/3.25	CUT & STRIP	5.08/.20	301025-003				
	2	WHITE	177.80/7.00			-004		65883-005		0.75µm/30µ"
	3	GREEN	177.80/7.00			-005		L/GRAY		
	4	BLACK	82.60/3.25	CUT & STRIP	5.08/.20	301025-002				
68974-011	1	RED	82.60/3.25	CUT & STRIP	5.08/.20	301025-003				
	2	BLACK	127.00/5.00			-002		65883-005		0.75µm/30µ"
	3	WHITE	127.00/5.00			-004		L/GRAY		
	4	GREEN	82.60/3.25	CUT & STRIP	5.08/.20	301025-005				
68974-012	1	RED	82.60/3.25	CUT & STRIP	5.08/.20	301025-003				
	2	WHITE	234.95/9.25			-004		65883-005	Plated	1.27µm/50µ"
	3	GREEN	234.95/9.25			-005		L/GRAY		
	4	BLACK	82.60/3.25	CUT & STRIP	5.08/.20	301025-002				

CUSTOMER COPY		DATE		
MATERIAL	FINISH	DATE		
SCALE	SIZE	DWG NO		
B	B	68974	SHEET 3 OF	
TITLE 616W SPADELESS M/J ASSY				
FCJ				



PRODUCT NO.  
68974

REV	DESCRIPTION	REV	DATE
A		S	

PRODUCT NO	POS. NO.	COLOR	LEAD LGTH DIM. 'L'	FINISH ON END OF WIRE	INS. STRIP DIM. X	INS. WIRE NO	(NOTE 2) HOUSING P/S & COLOR	(NOTE 3) TERMINAL PLATING	(NOTE 4) GOLD WIRE PLATING
68974-019	1	RED	54.00/2.13	STRIP & DIP	3.0 +0.5/-0 /12 +.02/-0	SK15149-003			
	2	WHITE	204.00/8.03			(UL-1061, AUG 26, 2004) SK15149-004	65883-005	NON-PLATED	1.27 μm/50 μ"
	3	GREEN	204.00/8.03			(NON-TAPABLE) SK15149-005			
	4	BLACK	54.00/2.13	STRIP & DIP	3.0 +0.5/-0 /12 +.02/-0	SK15149-002	L/GRAY		
68974-020	1	RED	174.00/6.85	CUT		300979-003			
	2	WHITE				-004	65883-005		0.75 μm/30 μ"
	3	GREEN				-005	L/GRAY		
	4	BLACK	174.00/6.85	CUT		300979-002			
68974-021	1	RED	185.00/7.28	CUT		300979-003			
	2	WHITE				-004	65883-005	NON-PLATED	0.75 μm/30 μ"
	3	GREEN				-005	L/GRAY		
	4	BLACK	185.00/7.28	CUT		300979-002			

SUBMITTED TO AP  
 CHECKED  
 DRAWING  
 DATE  
 BY  
 TITLE  
 PROJECT  
 NUMBER  
 DRAWING  
 NUMBER  
 SHEET  
 OF

CUSTOMER INSPECTION		TOLERANCES UNLESS OTHERWISE NOTED		DR		DATE		MATERIAL	
<input checked="" type="checkbox"/> THIRD ANGLE PROJECTION <input type="checkbox"/> DO NOT SCALE DRAWING		LINEAR MM INCH		CK'D ENGR APP'D		002 002.005 0.0020.12		FINISH 5/16/08	
NEXT ASSY		ANGLES ± 0° 30'		RADIO		SCALE		TITLE	
APPLICATION						A3		616W SPADELESS M/J ASSY	
						68974		SHT 5 OF 5	



THIS IS THE PROPERTY OF AND UNLESS OTHERWISE SPECIFIED BY THE DESIGN ENGINEER, IT IS TO BE USED IN ANY WAY WITHOUT THE WRITTEN CONSENT OF ROHM ELECTRONICS LTD.

		REVISIONS																	
		REV	DESCRIPTION								BY	DATE							
		B	ECRT10007								JACOB	910107							
PRODUCT NO.	WIRE NO.	WIRE COLOR	DIM. 'L' (MM)	INS. WIRE STYLE (NOTE 5)	HOUSING P/N,COLOR (NOTE 2)	HOUSING COLOR	SPLICE FINISH (NOTE 3)	SPRING CONTACT PLATING (NOTE 4)	DIM. 'X' (MM)	FINISH ON WIRE END									
68974-022	1	RED	48.0/1.89	301025-XXX	65883-005	LIGHT GRAY	UNPLATED	30U"AU	3.0/0.12	CUT & STRIP									
	2	WHITE																	
	3	GREEN																	
	4	BLACK	48.0/1.89																
68974-023	1	BLACK	60.0/2.36	301025-XXX	65883-005	LIGHT GRAY	UNPLATED	30U"GXT	3.0/0.12	CUT & STRIP									
	2	RED	190.0/7.48																
	3	GREEN	190.0/7.48																
	4	YELLOW	60.0/2.36																
68974-024	1	RED	81.8/3.22	301025-XXX	65883-005	LIGHT GRAY	UNPLATED	30U"GXT	5.08/0.20	CUT & STRIP									
	2	WHITE	234.2/9.22																
	3	GREEN	234.2/9.22																
	4	BLACK	81.8/3.22																
68974-025	1	RED	40.0/1.57	301025-XXX	65883-005	LIGHT GRAY	UNPLATED	30U"GXT	3.0/0.12	CUT & STRIP									
	2	WHITE	180.0/7.09																
	3	GREEN	180.0/7.09																
	4	BLACK	40.0/1.57																
68974-026	1	RED	82.55/3.25	301025-XXX	SK11521-2	BLACK	PLATING	15U"AU	5.08/0.20	CUT & STRIP									
	2	WHITE	234.95/9.25																
	3	GREEN	234.95/9.25																
	4	BLACK	82.55/3.25																
68974-027	1	RED	40.0/1.57	301025-XXX	65883-005	LIGHT GRAY	UNPLATED	30U"GXT	3.0/0.12	CUT & STRIP									
	2	WHITE	183.0/7.20																
	3	GREEN	183.0/7.20																
	4	BLACK	40.0/1.57																
68974-028	1	RED	50.0/1.97	300979-XXX	65883-005	LIGHT GRAY	UNPLATED	30U"AU	3.0/0.12	CUT & STRIP									
	2	WHITE	180.0/7.09																
	3	GREEN	180.0/7.09																
	4	BLACK	50.0/1.97																



SHEET INDEX	ISSUE B	SRT NO. 6	CUSTOMER		TOLERANCES UNLESS OTHERWISE NOTED		DATE		DR. JACOB		MATT		TITLE		SCALE		SIZE		DWG. NO.	
			THIRD ANGLE PROJECTION		LINEAR		OCT 22 09		OCT 22 09		OCT 22 09		MOD. JACK A'SSY 616W		A4		A4		68974-XXX	
NEXT ASSY			USED ON			RADIUS			APPROX. DATE			APPROX. DATE			APPROX. DATE			APPROX. DATE		
APPLICATION			DO NOT SCALE DRAWING			0.40			OCT 22 09			OCT 22 09			OCT 22 09			OCT 22 09		
			ANGLES			0.00%			OCT 22 09			OCT 22 09			OCT 22 09			OCT 22 09		
			-0.30			0.00%			OCT 22 09			OCT 22 09			OCT 22 09			OCT 22 09		
			-0.15			0.00%			OCT 22 09			OCT 22 09			OCT 22 09			OCT 22 09		
			-0.30			0.00%			OCT 22 09			OCT 22 09			OCT 22 09			OCT 22 09		

product no  
SEE CHART

PRODUCT NO.	WIRE NO.	WIRE COLOR	DIM. 'L'	INS. WIRE STYLE (NOTE 5)	HOUSING MATERIAL (NOTE 2)	HOUSING COLOR	SPLICE FINISH (NOTE 3)	SPRING CONTACT PLATING (NOTE 4)	DIM. 'X'	FINISH ON WIRE END
68974-029	1	RED	40.00/1.58	TYPE B	ABS UL 94V-0	LIGHT GRAY	UNPLATED	30U" GXT	3.0/0.12	CUT & STRIP
	2	WHITE	193.00/7.60							
	3	GREEN	193.00/7.60							
	4	BLACK	40.00/1.58							
68974-030	1	RED	40.00/1.58	TYPE B	ABS UL 94V-0	LIGHT GRAY	UNPLATED	30U" AU	2.5/.10	CUT & STRIP
	2	WHITE	↑							
	3	GREEN	↓							
	4	BLACK	40.00/1.58							
68974-031	1	RED	44.00/1.732	TYPE B	ABS UL 94V-0	LIGHT GRAY	UNPLATED	30U" GXT	3.0/0.12	CUT & STRIP
	2	WHITE	194.00/7.638							
	3	GREEN	204.00/8.031							
	4	BLACK	44.00/1.732							
68974-032	1	RED	163.0/6.42	TYPE B	ABS UL 94V-0	LIGHT GRAY	UNPLATED	30U" GXT	3.0/.12	CUT & STRIP
	2	WHITE	↑							
	3	GREEN	↓							
	4	BLACK	163.0/6.42							

MKT CODE		tolerances unless otherwise specified		CUSTOMER COPY	FCI
dr	eng	0.00-0.25/ .005-.01	projection	the	616 W SPADELESS MOD JACK
F	T	0.00-0.137/ .000-.005	mm	product family	MOO JACK
G	ECR.T.0137	0.000-0.09/ .0000-.002	inch	size/dwg no	A4
H	TU0714	±0.30	scale	code	TWIN
		dr	T. CHIEN	MOO JACK	68974
		engr	T. CHIEN	MOO JACK	7 of 7
		chr	J. TSAO		
		appd	J. TSAO		
sheet	revision				
index	sheet				